

Maa-ameti WMS teenuste kasutamine Manifold 9 tarkvaraga

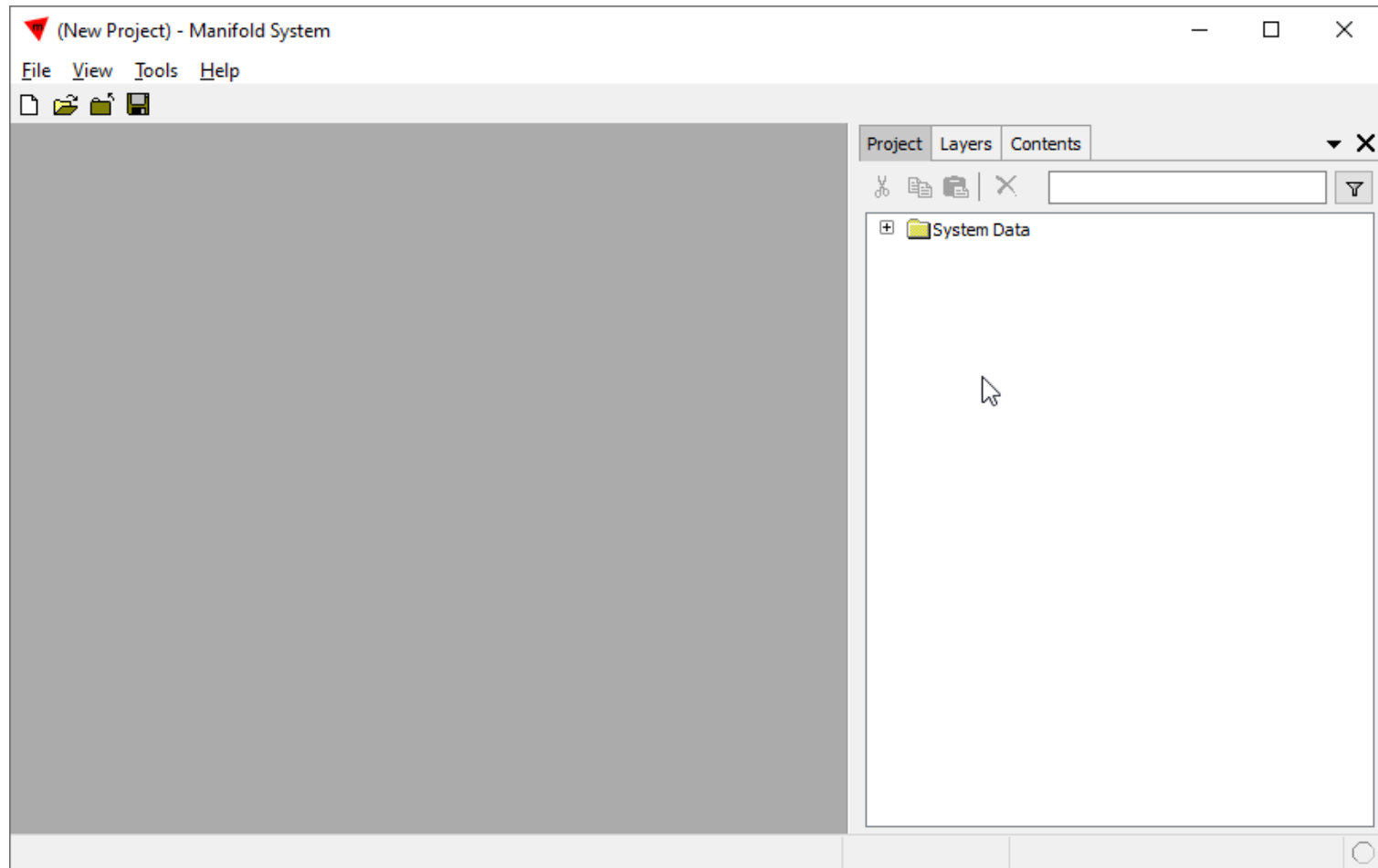


Proovimiseks kasuta [tasuta vaaturit](#)

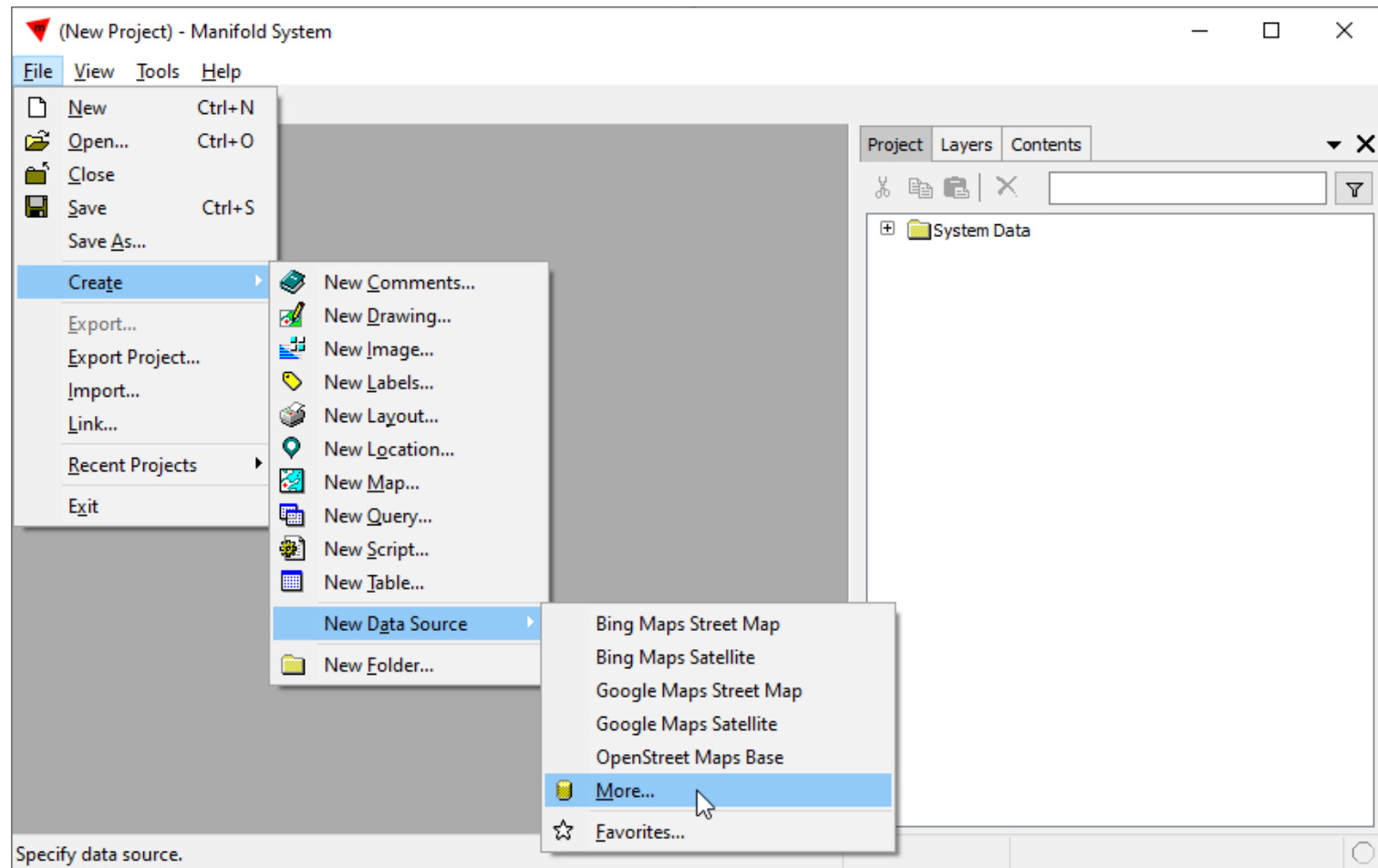
Koostaja Riivo Kolka

kuus.koma.kaks.kaheksa@gmail.com

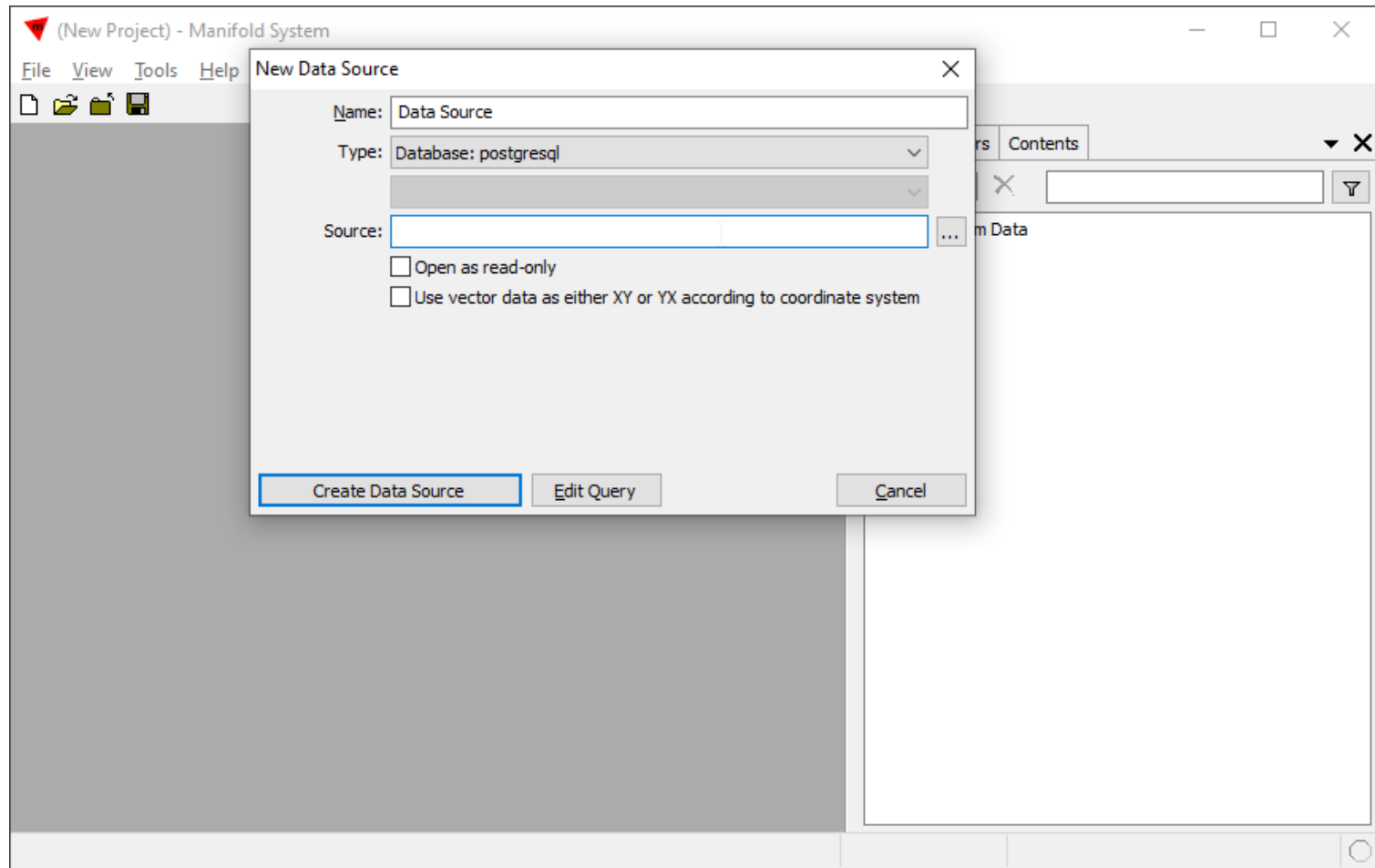
Käivita Manifold



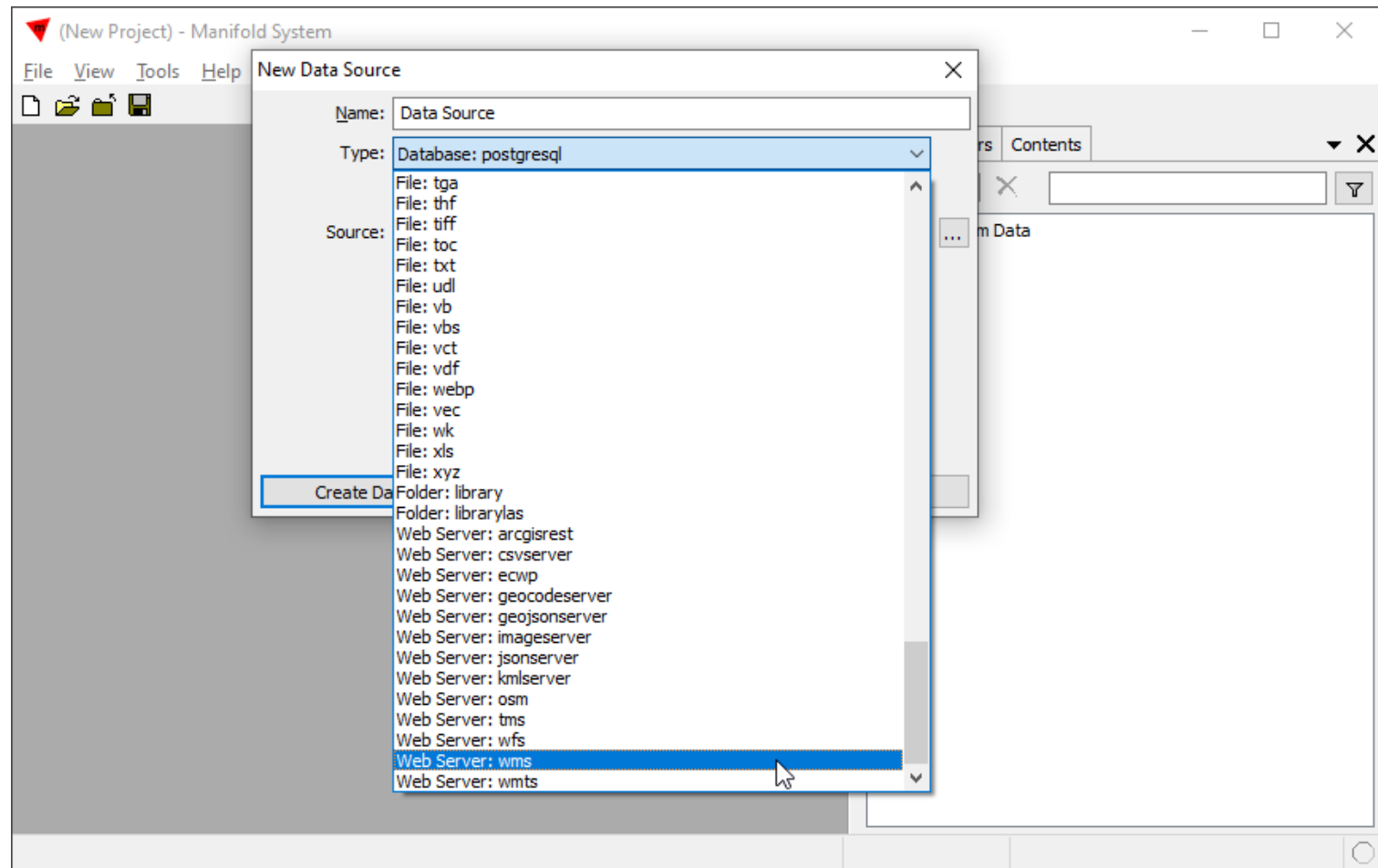
Lisa uus andmeläte



Määrata tuleb Nimi, Tüüp ja Aadress. Nime valid ise

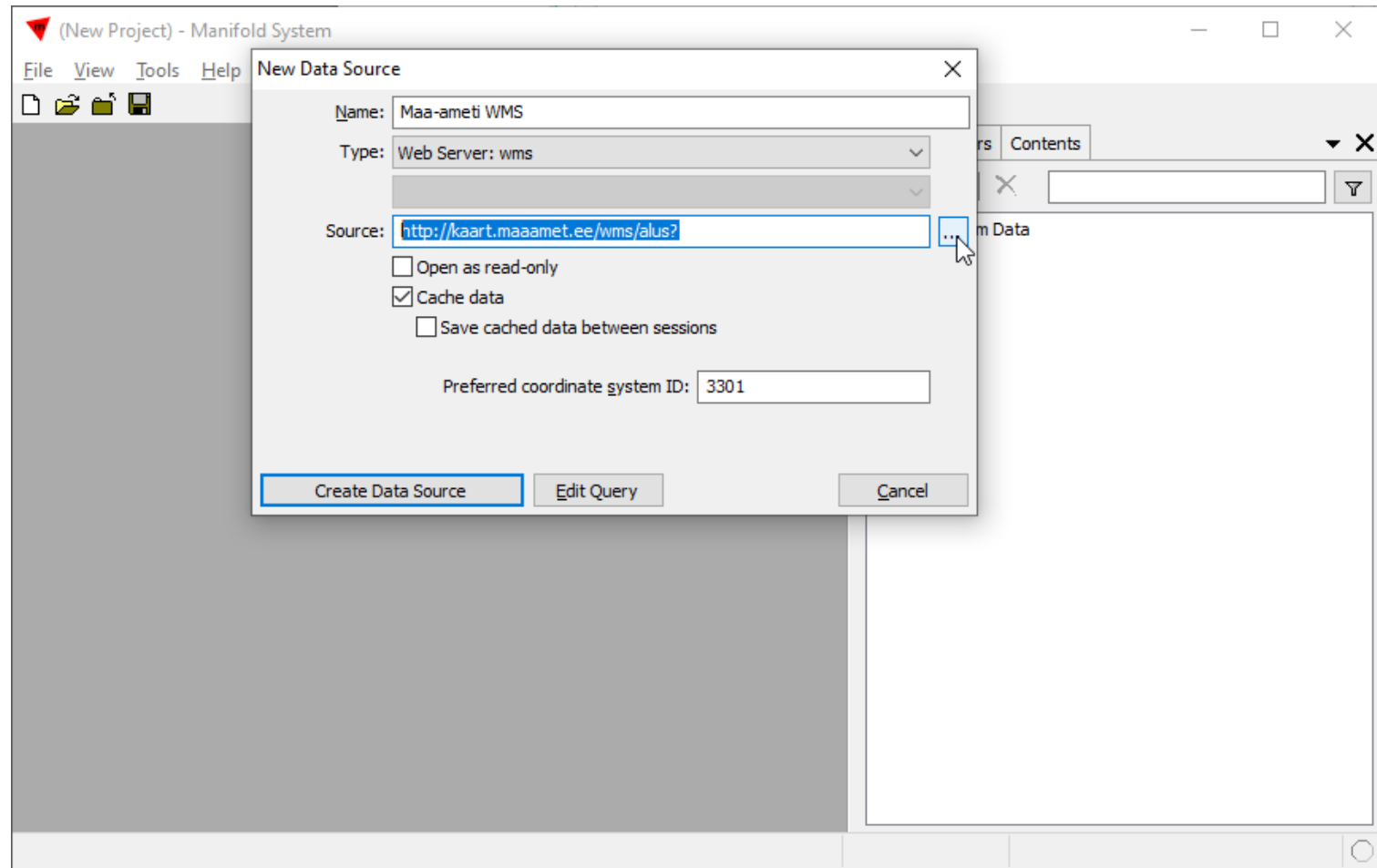


Tüübiks vali Web Server: wms

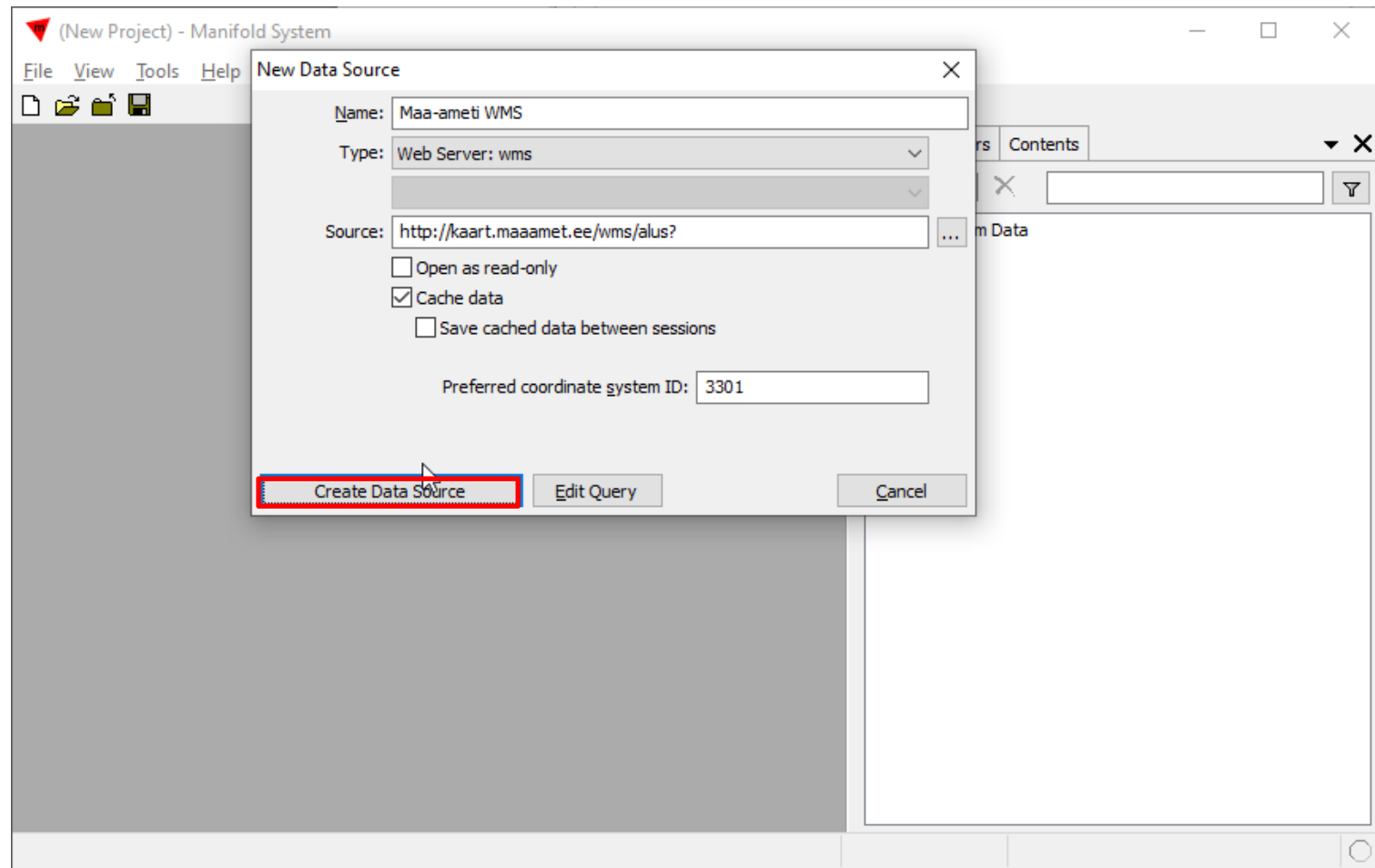


Address:

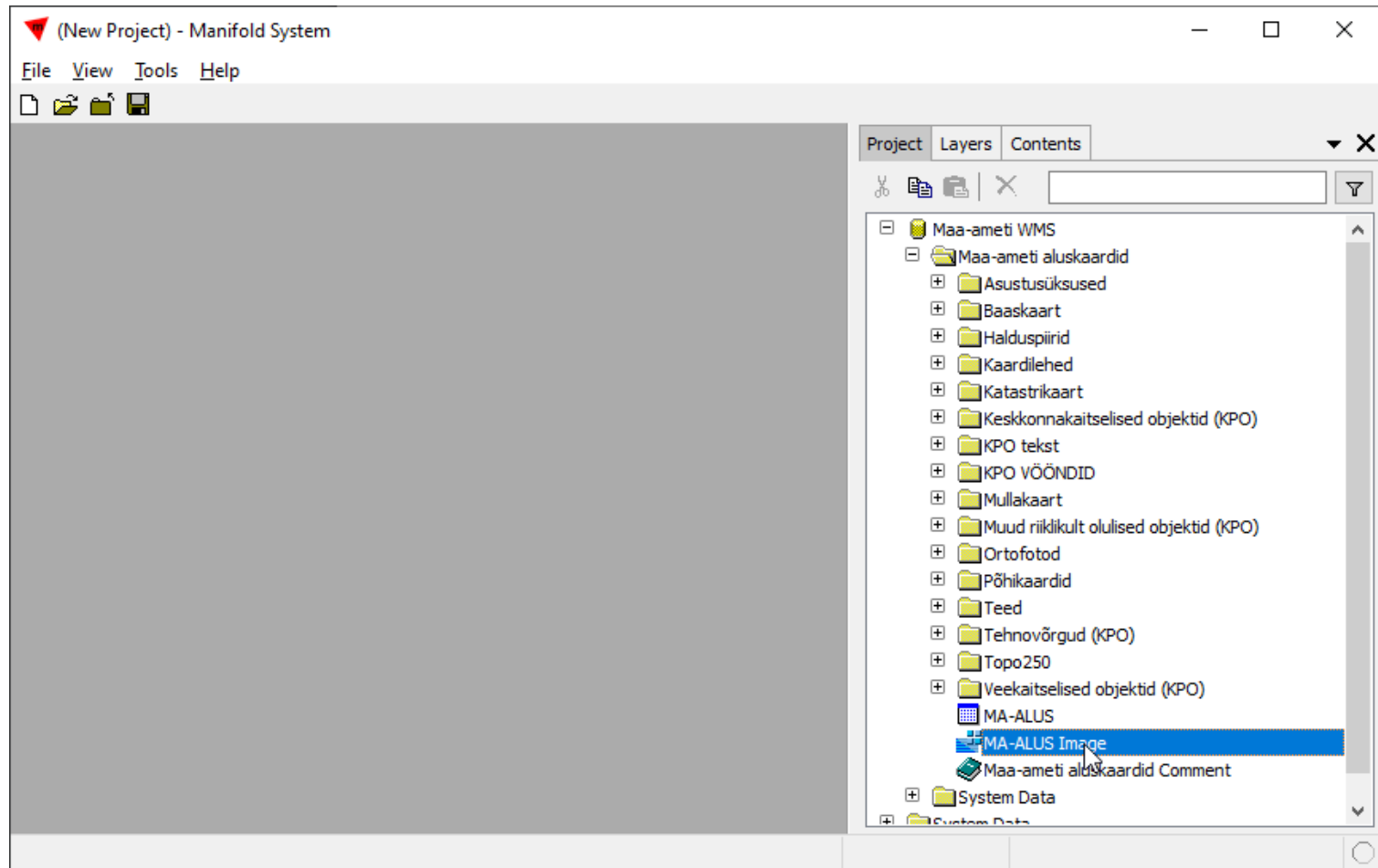
<http://kaart.maaamet.ee/wms/alus?>



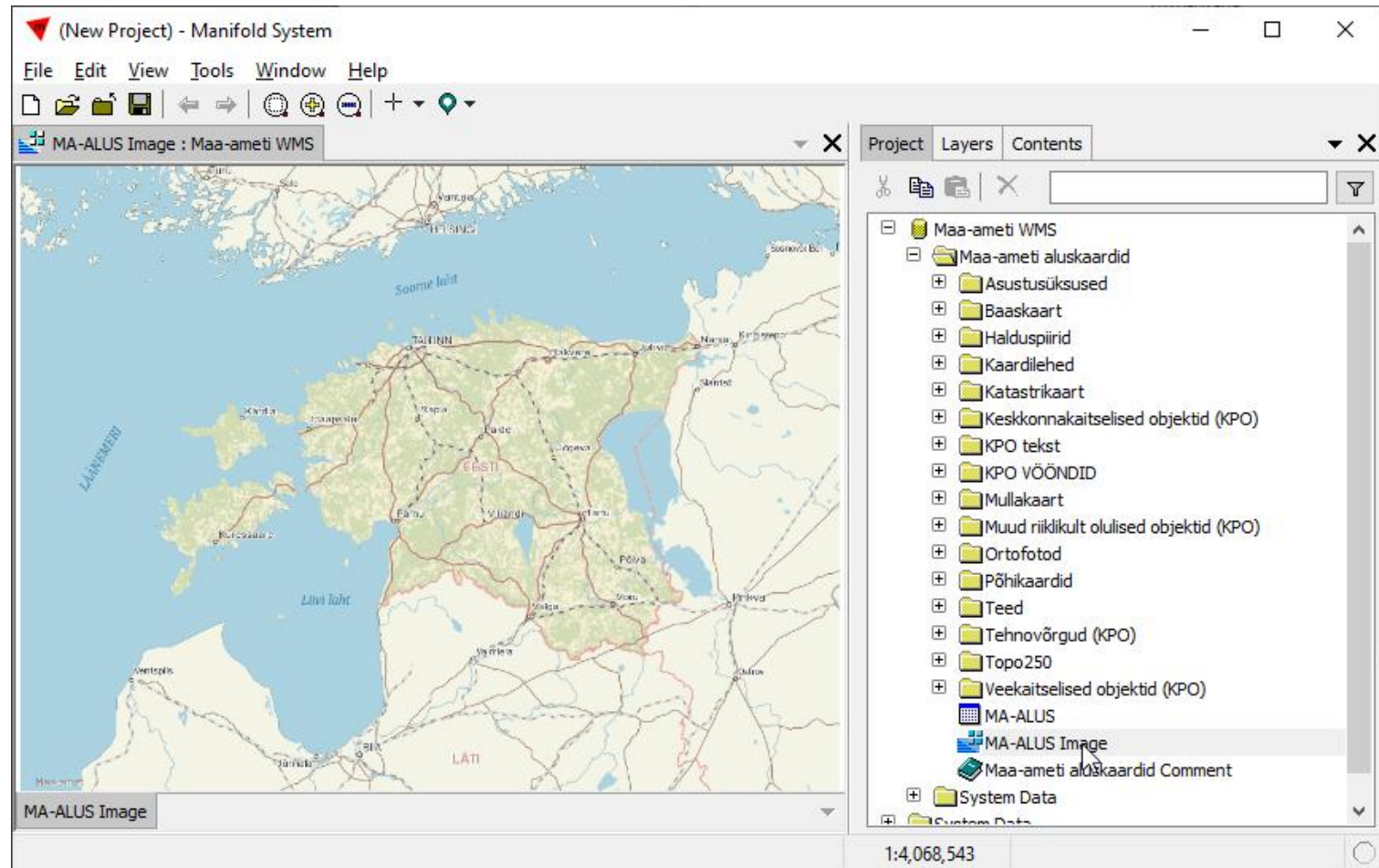
Määra koordinaatsüsteemi eelistus, nt 3301 (L-EST97)



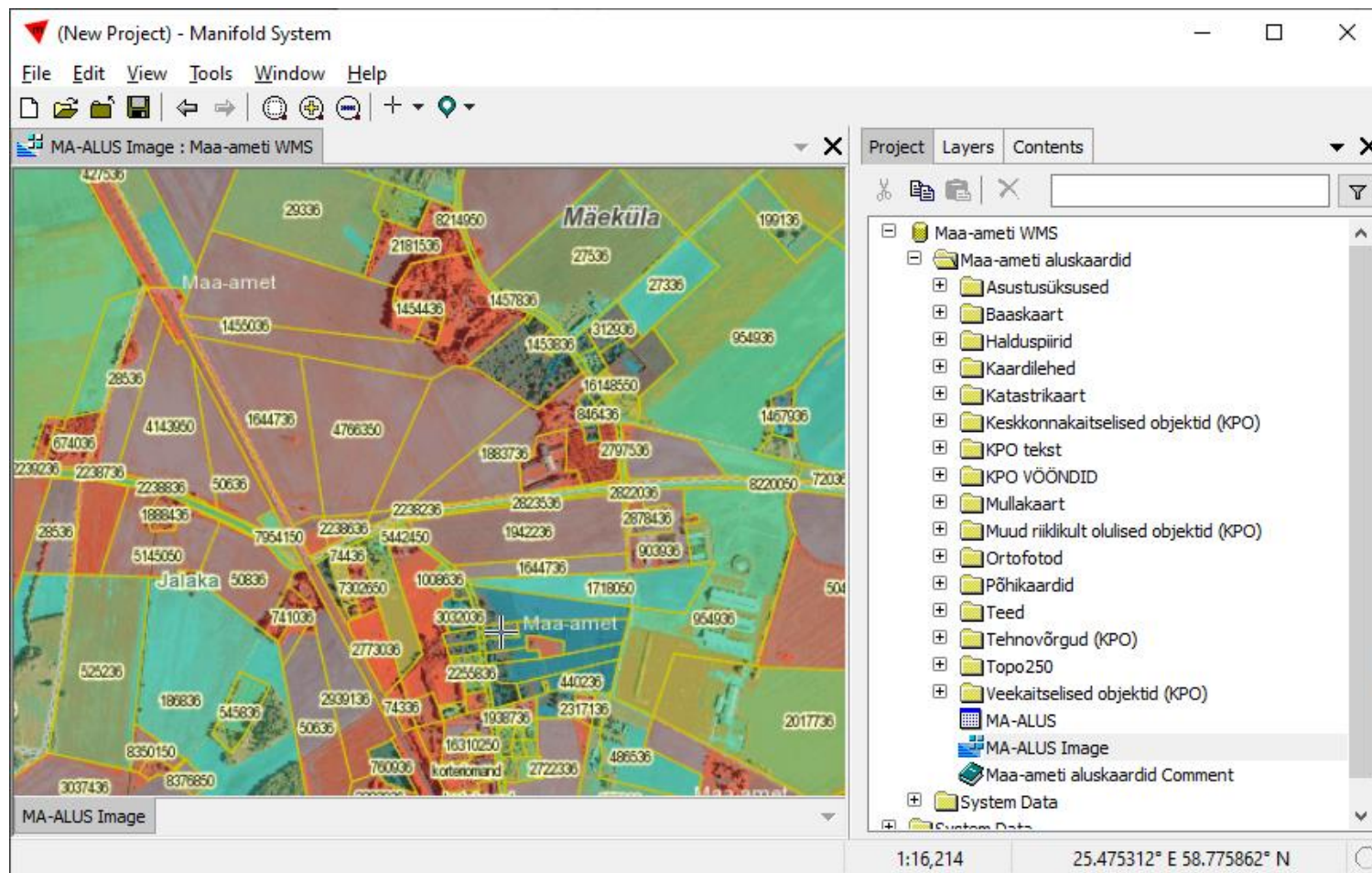
Avanevas puus kliki MA-ALUS Image-l



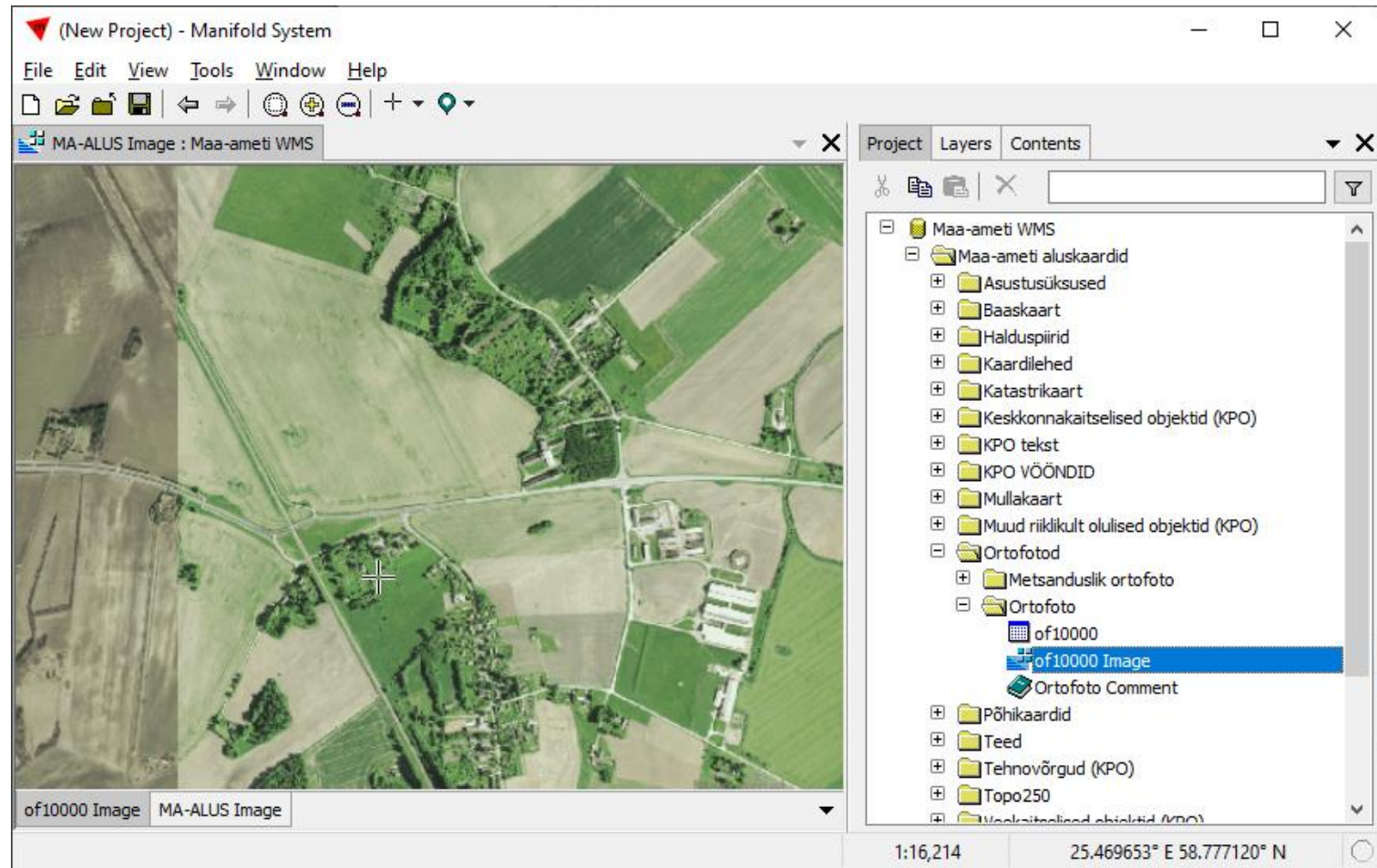
Suumi mõõtkavale, kus tulevad nähtavale katastripiirid



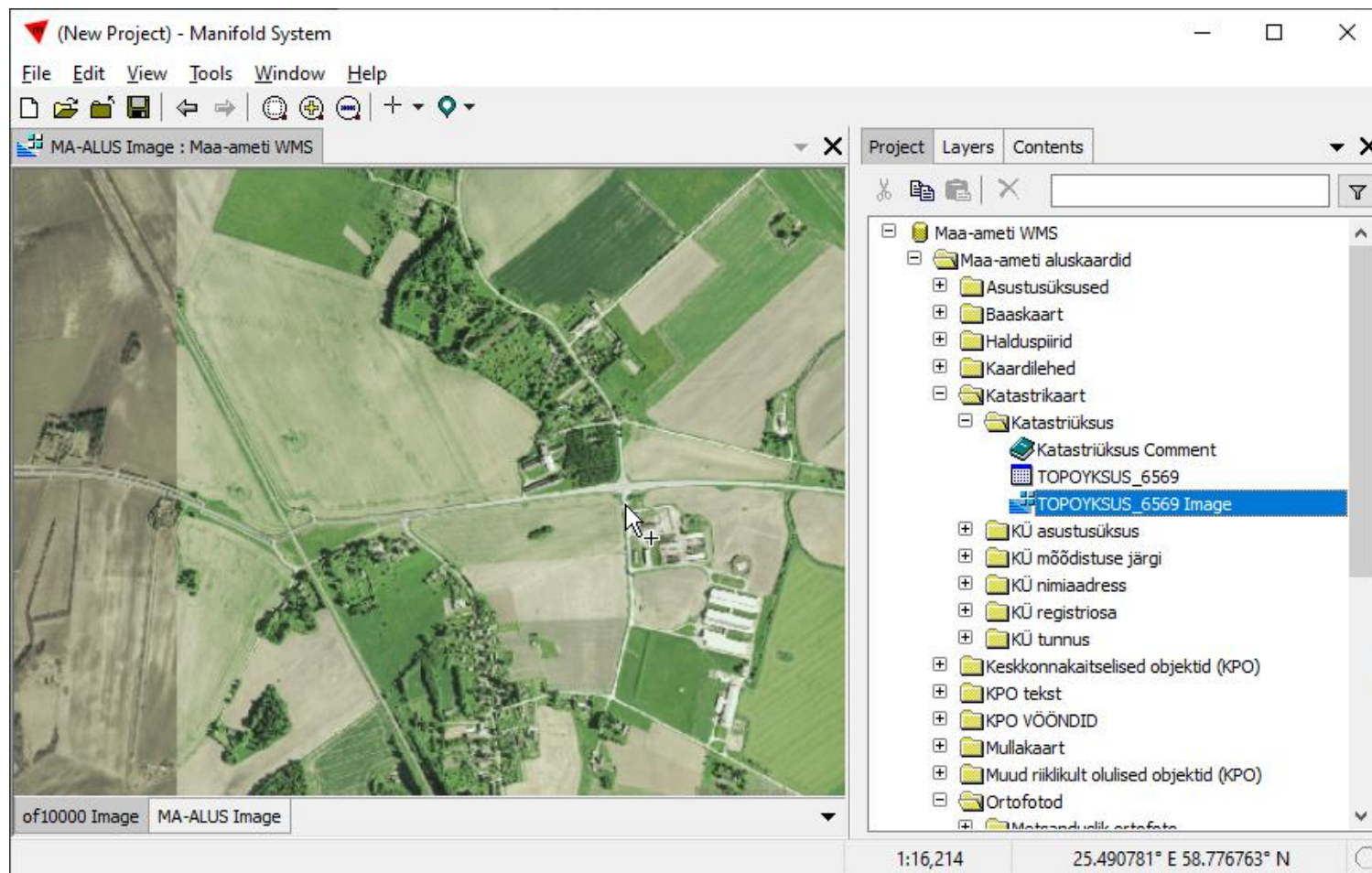
Umbes nii



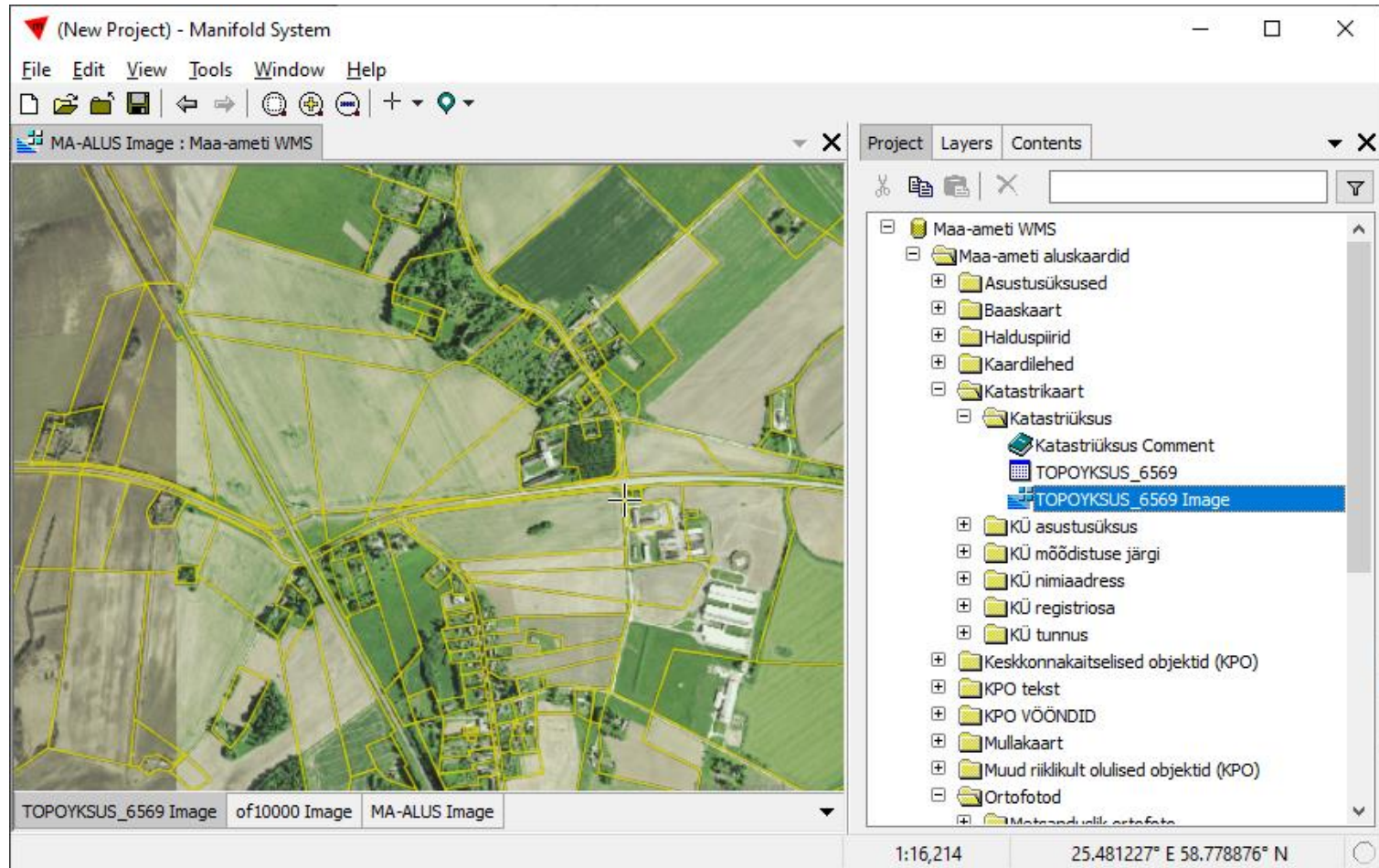
Lohista of10000 Image kaardiaknasse



Lohista TOPOYKSUS_6569 Image kaardiaknasse



Uuri maad



Vaata ja küsi lisaks

- Koduleht <http://www.manifold.net/>
- Tasuta vaatur http://www.manifold.net/updates/download_viewer.shtml
- Kasutusjuhend <http://www.manifold.net/doc/mfd9/index.htm#>
- Videojuhendid <https://www.youtube.com/channel/UCy4F7Bgf5tyHQQ4PolamF-w/videos>
- Foorum (inglisekeelne) <http://www.georeference.org/forum/h>
- Tõlkefailid, sh eesti keelde <http://www.manifold.net/info/localization.shtml>
- Eestikeelne tugi ja nõuanne OÜ Kuus Koma Kaks Kaheksa kuus.koma.kaks.kaheksa@gmail.com